



Sync™ Stereo Earmuff Ordering Information

SKU	Description	Packaging	Configuration
1030110	Sync Stereo Earmuff	Clamshell	12 EA per Case (2 EA per Inner Pack)
1030220	Hygiene Kit (pair ear cushions and foam inserts)	Polybag	10 PR/Box
1017210	3.5mm Replacement Audio Cable	Polybag	1 EA

Sync™ Attenuation Data

U.S. NRR 25; Canada Class A. Attenuation data tested according to ANSI S.3.19-1974.

Frequency	125	250	500	1000	2000	3150	4000	6300	8000
Mean Attenuation	19.1	22.4	28.7	31.7	36.8	39.0	39.4	39.4	41.4
Standard Deviation	3.6	2.2	1.9	2.6	3.7	3.1	2.8	1.9	3.9

Sync™ Fitting Instructions

Fitting: Place the ear cups over the outer ear. Adjust the headband by sliding the headband up or down at the attachment buttons. The ear cushions should seal firmly against the head.

Optimized Fit: For best results, remove all hair under the cushion. Noise reduction will be adversely affected by anything that impairs the seal of the earmuff cushions against the head, such as thick spectacle frames, balaclavas, etc.

⚠ WARNING: All hearing protection affords limited protection. The user is responsible for the proper selection, use, care and maintenance of this device. Improper selection (including under/over protection), use or maintenance may lead to serious hearing loss.

⚠ WARNING: For portable audio devices with output greater than 126mV, the manufacturer cannot guarantee that volume of the Sync will be limited to 82dB. Failure to maintain output levels at 126mV or less while using this device could result in hearing loss to the user of this product over time.

Sync™

Play it. Safe.



Most stereo earmuffs provide some level of hearing protection.

But often sacrifice sound quality for attenuation.

That's why we created Sync™, the latest innovation in passive hearing protection for active lifestyles.

It's a stereo earmuff that's in sync with proper levels of hearing protection, high-fidelity sound, and your ability to listen to portable audio devices safely at work – and at home.



Sperian Hearing Protection, LLC
7828 Waterville Road
San Diego, CA 92154



ph 800.430.5490
fax 401.232.3112
www.howardleight.com

HLI.773 RPI 01/11





x Sync's 25 Noise Reduction Rating (NRR) provides ideal protection from most low and medium levels of hazardous noise.

x Volume Management Technology manages output volume from your portable audio devices to 82 dBA*.

Protection

Safety managers love the new Sync stereo earmuffs as much as their workers do. For starters, Sync's acoustically optimized earcup design delivers excellent protection against hazardous noise. Inside, Sync's speaker technology manages sound levels reaching the user's ear to a safe 82 dBA*. That's well within OSHA's recommended 85 dBA Action Level.

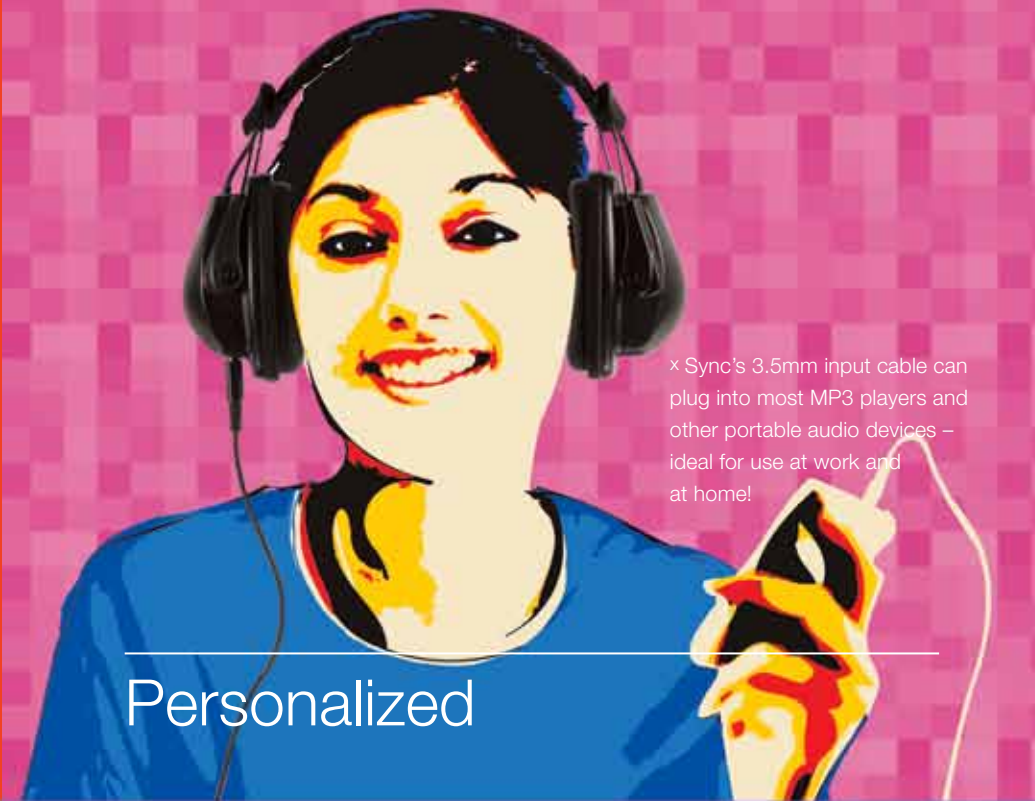
** Based on sound output no greater than 126mV.*

At any workplace, Sync helps keep you motivated, and productive. It brings more satisfaction to the job, anywhere from general manufacturing and light assembly work to agriculture – or even listening at home. Sync has no volume knob or power switch to fiddle with, and no batteries to replace, so users can just plug in and go!

Productivity



Personalized



x Sync's 3.5mm input cable can plug into most MP3 players and other portable audio devices – ideal for use at work and at home!

The system controls volume to safe levels. But users have everything else just the way they want it. They simply plug Sync into their MP3 players or other portable audio devices. They turn on and off power and adjust volume through their portable audio devices, too. When they hear the audio quality they'd expect only from good home-use headphones, it doesn't take long for them to really get in Sync!

For use at work or at home, Sync's DJ-inspired earcup design and sound quality are on par with other professional and high-end personal headphones on the market. Sync boasts the most stylish design of any industrial earmuffs you've seen – with hearing protection that beats any entertainment headphones on the market. (All at a price close to what you'd pay for other good industrial earmuffs!) The Sync system sounds so good and looks so cool, people are wearing them home!

Style

x Sleek diamond pattern headband is easy to clean.



x Reinforced fork slides with handholds for easy and comfortable fit.

x Sync's technologically advanced acoustical bass chamber (patent pending) enhances bass sounds that are typically sacrificed in a stereo earmuff, eliminating the need to "crank up" the volume.

